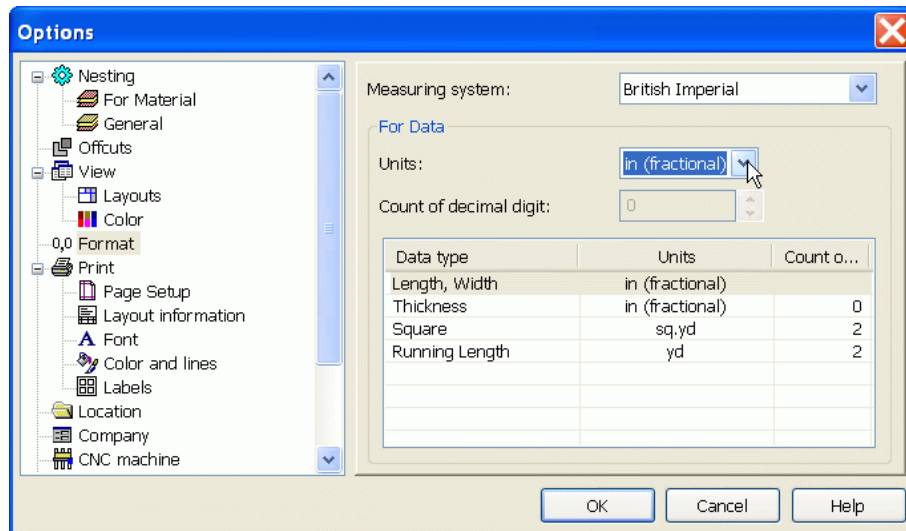


Configuring the data format

Astra R-Nesting allows you to configure the way your data are represented: part sizes, sheets and cutoffs, area, cuts length, etc. When configuring the format, you can use the Metric or the British Imperial measurement system. Each of these systems allows you to set the required accuracy – the number of digits after the decimal separator. Besides, when using the Imperial system, you can specify the sizes of parts, plates and cutoffs in fractional inches.

To configure the data format, use the Tools – Options command and go to the Format section (see the screenshot below). You can also click the Format button on the order form toolbar.



The Parameters dialog windows, Format section

To configure the data format, select the Data type in the list and then specify the measurement unit and the number of fractional digits for it.

If the size and thickness of parts, plates and cutoffs are represented in fractional inches, the number of fractional digits is not set.

Web-page: <http://www.astranest.com>